

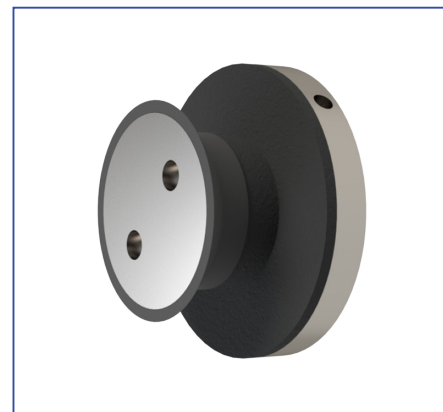


IF.TF2.50.008.4S

Mocowanie punktowe $\varnothing 48$ mm

Point fitting $\varnothing 48$ mm

-  AISI 304
-  inox stainless steel
-  8 - 16,52 mm
-  specjalne special
-  8 mm



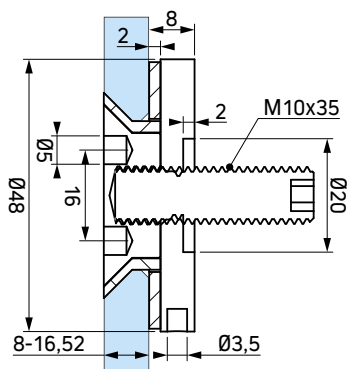
Opis

Description

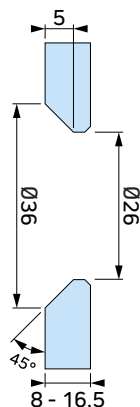
Rozeta mocowania punktowego o średnicy $\varnothing 48$ mm do szkła fazywanego o grubości od 8 do 16,52 mm, do mocowania na tulei dystansowej $\varnothing 20$ mm. Rozeta (popularna „świnka”) dokręcana kluczem nastawnym.

Point fitting rosette with diameter of $\varnothing 50$ mm, dedicated for bevelled glass of width from 8 to 16,52 mm, for assembling with a distance sleeve $\varnothing 20$ mm. Rosette (commonly know as „piggy”) is tightened with adjustable face spanner wrench.

Wymiary Dimensions



Otworowanie szkła Glass processing



Produkty uzupełniające Complementary products



| ID | |  |
|--------------|--|---|
| IF.TT.020.4S | tuleja dystansowa $\varnothing 20$ mm distance sleeve $\varnothing 20$ mm | 20 mm |
| IF.TT.030.4S | tuleja dystansowa $\varnothing 20$ mm distance sleeve $\varnothing 20$ mm | 30 mm |
| IF.TT.040.4S | tuleja dystansowa $\varnothing 20$ mm distance sleeve $\varnothing 20$ mm | 40 mm |
| IF.TT.050.4S | tuleja dystansowa $\varnothing 20$ mm distance sleeve $\varnothing 20$ mm | 50 mm |
| IF.TT.060.4S | tuleja dystansowa $\varnothing 20$ mm distance sleeve $\varnothing 20$ mm | 60 mm |
| IF.TT.070.4S | tuleja dystansowa $\varnothing 20$ mm distance sleeve $\varnothing 20$ mm | 70 mm |
| IF.TT.080.4S | tuleja dystansowa $\varnothing 20$ mm distance sleeve $\varnothing 20$ mm | 80 mm |